



砼创机械
TONG CHUANG MECHANICAL

PRODUCT BROCHURE
产品宣传册

砼筑梦想 共创未来

长沙砼创机械有限公司
CHANGSHA TONG CHUANG MECHANICAL LTD

免费服务电话: 400-116-227 +86 17775886388 +86 18975137227

地址: 湖南省长沙经济开发区人民东路二段169号

网址: <http://www.concretepump-spareparts.com>

Toll-free telephone: 400-1166-227

Address: No.169, Section 2 Renmin East Road, Changsha Economic Development Zone, Hunan, China



长沙砼创机械有限公司
CHANGSHA TONG CHUANG MECHANICAL LTD



专业信赖 品质服务

PROFESSIONAL TRUST
QUALITY SERVICE

03 企业简介
Company Profile

05 产品介绍
Product Introduction

06 配件
Subassembly

19 工程机械专用润滑油
Engineering Machinery Special Lubricant

20 翻新再制造
Refurbishment and Remanufacturing

21 服务案例
Service Case List



长沙砼创机械有限公司是一家集工程机械翻新再制造;二手设备销售;零部件生产销售;新材料、新能源应用;一站式服务于一体工贸企业。公司系中国混凝土机械协会会员单位,3A级诚信经营企业!公司秉承“品质求存,服务先行”的经营理念,采用线上线下运营模式,构建工程机械全周期服务产业链,为客户提供增值服务。目前主要经营混凝土机械、其他工程机械为辅。国内服务主要的客户有中交集团、中国核电、中建海外、中江国际等大型企业;海外业务覆盖了中亚,中东,南亚及非洲等地区。产品及服务深得国内外客户的一致好评!

长期以来,公司坚持以产品为客户提供价值,让服务为客户创造价值,以方案与客户共享价值!为客户提供最佳的解决方案。愿与您携手“砼筑梦想,共创未来!”

Changsha Tong Chuang Machinery Co., Ltd. is a company that specializes in the renovation and remanufacturing of engineering machinery; Sales of second-hand equipment; Production and sales of components; New materials and new energy applications; One stop service for integrated industrial and trade enterprises. The company is a member unit of the China Concrete Machinery Association and a 3A level integrity management enterprise! The company adheres to the business philosophy of "quality survival, service first", adopts an online and offline operation mode, builds a full cycle service industry chain for construction machinery, and provides value-added services to customers. At present, the main business is concrete machinery, supplemented by other engineering machinery. The main domestic clients include large enterprises such as China Communications Corporation, China Nuclear Power, China Construction Overseas, and Zhongjiang International; Overseas business covers regions such as Central Asia, the Middle East, South Asia, and Africa. Our products and services have won unanimous praise from domestic and foreign customers!

For a long time, the company has adhered to providing value to customers through products, creating value for customers through services, and sharing value with customers through solutions! Provide customers with the best solution. We are willing to work together with you to build dreams with concrete and create a future together.

企业简介

COMPANY PROFILE

产品介绍

PRODUCT INTRODUCTION

配件

Subassembly



双层泵管

一、制模

采用先进的覆模砂工艺,使产品尺寸稳定,变形量少,外观平整。异形管采用消失模工艺,灵活多变,能为客户提供各种型号产品。

二、熔炼

采用中频电炉冶炼,电脑测温,炉前光谱仪化学成份分析,使产品化学成份稳定,质量可靠。

三、热处理

采用箱式电阻炉,全程电脑控制,淬火液采用自主研发液体,产品在淬火过程中不开裂,使产品硬度达HRC65-68度,韧性好,从而使产品在使用过程中更耐磨、更安全。

四、过程控制 保证出品质量

- 1、运用ESSER感应淬火、高精切管、喷淋焊接等先进工艺,建成双层直管批量生产线。
- 2、专业全自动化焊接。
- 3、实行首检+定检+抽检,整体质量控制。
- 4、内外套管复合,中间填充特殊材料实现过渡,防冲击。
- 5、烤漆涂装。

五、产品个性化定制:

- 1、根据不同型号的臂架泵车,服务工程师结合现场施工,分析出这一米段泵车常见的臂架姿态,统计泵车从下车至臂架各位置的磨损情况,针对不同位置的磨损,厂内采用不同的加强方式(材料加强或厚度加强),实现整个泵车管道的磨损均匀,从而确保成套管道质保方量。
- 2、公司根据同种型号、不同位置、不同泵车的管道实现差异化设计,使管道摆脱标准化的束缚,最大限度的满足产品的耐磨性能要求。如弯管:可以针对转台、末端作特殊设计;如直管:可以针对走台进行加厚,针对弯管相连的直管进行进口加强等,特别是直管,进口端的加强区的长度也可以进行差异化设计,实现任意位置使用寿命的最大化。
- 3、个性化的定制能使混凝土泵车管道使用更加实用。服务工程师根据多年累积的数据,根据不同品牌,不同米段,不同地域有针对性的为客户提供泵管优化组合解决方案。既为客户提供三种不同方案的方量质保,也可为客户个性定制。

规格型号

6/8万方双层设计,外壁:133mm,内径:125mm。

SPECIFICATIONS AND MODELS

6 / 80,000 cubic meters of double-layer design, Outer wall: 133mm, Inner diameter: 125mm.

DOUBLE LAYER PUMP PIPE

一、Moulding

Adopting advanced covering sand technology ensures stable product size, minimal deformation, and a smooth appearance. The special-shaped tube adopts the lost foam process, which is flexible and versatile, and can provide customers with various models of products.

二、Melting

Adopting an intermediate frequency electric furnace for smelting, computer temperature measurement, and chemical composition analysis using a spectrometer in front of the furnace, the product's chemical composition is stable and the quality is reliable.

三、Heat treatment

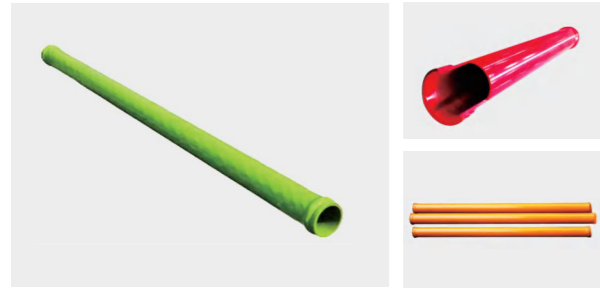
Adopting a box type resistance furnace and computer-controlled throughout the entire process, the quenching liquid adopts self-developed liquid. The product does not crack during the quenching process, resulting in a hardness of HRC65-68 degrees and good toughness, making the product more wear-resistant and safer during use.

四、Process control ensures product quality

- 1、Utilize advanced processes such as ESSER induction quenching, high-precision pipe cutting, and spray welding to build a double-layer straight pipe batch production line.
- 2、Professional fully automated welding.
- 3、Implement initial inspection, regular inspection, and random inspection to ensure overall quality control.
- 4、Composite inner and outer sleeves, filled with special materials in the middle for transition and impact resistance.
- 5、Paint coating.

五、Product Personalization Customization

- 1、Based on different models of boom pump trucks, service engineers combined with on-site construction to analyze the common boom posture of this one meter section of pump trucks, and calculate the wear situation of the pump trucks from the vehicle to each position of the boom. For different wear positions, different reinforcement methods (material reinforcement or thickness reinforcement) are adopted in the factory to achieve uniform wear of the entire pump truck pipeline, thereby ensuring the quality assurance of the complete pipeline.
- 2、The company realizes differentiated design according to the pipelines of the same model, different locations and different pump trucks, so that the pipelines can get rid of the constraints of standardization and meet the wear resistance requirements of products to the maximum extent. For example, curved pipes: special designs can be made for turntables and ends; For example, straight pipes: Thickening can be applied to the walkway, and inlet reinforcement can be applied to the straight pipes connected by bent pipes. Especially for straight pipes, the length of the reinforcement zone at the inlet end can also be differentiated to achieve any position maximize the service life of the device.
- 3、Personalized customization can make the use of concrete pump truck pipelines more practical. Based on years of accumulated data, service engineers provide targeted pump pipe optimization and combination solutions for customers according to different brands, rice segments, and regions. We provide customers with three different quality assurance options, as well as personalized customization.



双层直管

加强头: 在接弯管的冲击最严重一端, 内壁耐磨层加厚保证使用寿命。

安全高: 内外层全都采用无缝管, 内管为高硬度耐磨合金钢, 外管为高韧性低合金钢, 保证施工安全。

规格型号

长度: 0mm-4045mm

DOUBLE LAYER STRAIGHT PIPE

Strengthening head: At the end where the impact of the elbow is the most severe, the inner wall wear-resistant layer is thickened to ensure its service life.

High safety: Both the inner and outer layers are made of seamless pipes, with the inner pipe made of high hardness wear-resistant alloy steel and the outer pipe made of high toughness low alloy steel, ensuring construction safety.

SPECIFICATIONS AND MODELS

Length: 0mm-4045mm



爬坡弯管

双层金属管结构, 直管内管为高碳合金钢, 硬度达HRC 65, 弯管内管为高铬合金钢, 硬度达 HRC 65, 更耐磨, 更安全! 两端法兰口采用加长法兰设计, 中间接头采用加长耐磨套, 提高局部抗磨损能力。

规格型号

150*R650(537)A-33° 150*R650-40°(598) 150A45R400

CLIMBING BEND

Double layer metal pipe structure, with high carbon alloy steel inside the straight pipe, The hardness reaches HRC 65, and the inner pipe of the bend is made of high chromium alloy steel. The hardness reaches HRC 65, making it more wear-resistant and safer! The flange ports at both ends are designed with extended flanges, and the middle joint is equipped with extended wear-resistant sleeves to improve local wear resistance!.

SPECIFICATIONS AND MODELS

150*R650(537)A-33° 150*R650-40°(598) 150A45R400



双层弯管

内层采用铸造高铬高硬度耐磨合金钢, 外管为高韧性低碳钢。在接弯管的冲击最严重的背弯处加厚保证使用寿命。

规格型号

R275 R190.5 R180

DOUBLE LAYER BEND

The inner layer is made of cast high chromium, high hardness, and wear-resistant all steel. While the outer pipe is made of high toughness low carbon steel.

Thickening at the back bend where the impact of the elbow is most severe ensures its service life.

SPECIFICATIONS AND MODELS

R275 R190.5 R180



末端弯管

末端弯管主要针对易磨损区, 耐磨层厚度提升到24--30mm厚, 是普通双层弯管的3倍及以上, 外弧面采用的高铬铸铁材料, Cr含量 29, 同时含有合金元素 Ni, Mo, V; 是高铬铸铁行业最耐磨的铸铁, 耐磨性是常用双层弯管耐磨铸铁的 1.5 倍以上, 弯管总重量减轻 15%以上, 从两端、两侧向中间变厚, 将内半弯及两侧的重量补充至外弧面高铬铸铁上。

规格型号

R275 R190.5 R180

END BEND

The end bend is mainly aimed at areas prone to wear and tear, and the thickness of the wear-resistant layer has been increased to 24-30mm, which is three times or more than that of ordinary double-layer bends. The outer arc surface is made of high chromium cast iron material with a Cr content of 29 and alloy elements Ni, Mo, and V; It is the most wear-resistant cast iron in the high chromium cast iron industry, with a wear resistance of more than 1.5 times that of commonly used double-layer bend wear-resistant cast iron. The total weight of the bend is reduced by more than 15%, and it thickens from both ends and sides to the middle. The weight of the inner half bend and both sides is added to the outer curved high chromium cast iron.

SPECIFICATIONS AND MODELS

R275 R190.5 R180



铰链弯管 二号弯管 锥管

铰链弯管, 二号弯管采用进口材料堆焊而成具有超强耐磨, 超高稳定性, 硬度≥62HRC, 使用寿命可达10万方以上, 锥管为双层高铬铸铁耐磨材料, 含钼, 钒, 铬等微量元素, 其中铬含量≥26%, 使用方量增加, 大大降低客户维修换件成本。

规格型号

402F2000	201B04	202C03
150-150A900	175-150A900	150-125A*1400

HINGED ELBOW NO.2 ELBOW TAPER PIPE

The hinge elbow and No. 2 elbow are made of imported materials by surfacing welding, which have excellent wear resistance and high stability. The hardness is ≥ 62HRC, and the service life can reach more than 100000 cubic meters. The cone tube is made of double-layer high chromium cast iron wear-resistant material, containing trace elements such as molybdenum, vanadium, and chromium, with a chromium content of ≥ 26%, which increases the amount of labor used and greatly reduces the cost of customer maintenance and replacement parts.

SPECIFICATIONS AND MODELS

402F2000	201B04	202C03
150-150A900	175-150A900	150-125A*1400



S 管

高强度,高耐磨,内壁使用进口材料堆焊,花键轴渗氮处理硬度控制在650HV以上耐磨材料堆焊,使用寿命8万方以上,可定制,适用于各大品牌主机厂家混凝土泵车,拖泵,车载泵。

规格型号

DN180 DN200 DN230 DN260

S-TUBE

High strength, high wear resistance, use imported materials for surfacing welding on the inner wall, and control the hardness of the spline shaft nitriding treatment to be above 650HV. The wear-resistant material surfacing welding has a service life of over 80000 cubic meters, and can be customized. It is suitable for concrete pump trucks, towing pumps, and on-board pumps of various major brand host manufacturers.

SPECIFICATIONS AND MODELS

DN180 DN200 DN230 DN260



眼镜板

采用双合金结构,合金宽度8mm,合金硬度大于HRA85,内孔壁采用进口焊条堆焊,硬度达到HRC65以上,质保4万方,可针对各大主机品牌,不同型号眼镜板进行定制生产制,适用于各大品牌主机厂家混凝土泵车,拖泵,车载泵。

规格型号

DN180 DN200 DN230 DN260

GLASS PLATE

It adopts a dual alloy structure, with an alloy width of 8mm, and an alloy hardness greater than HRA85. The inner hole wall is welded with imported welding rods, with a hardness of over HRC65, and a quality assurance of 40000 m3. It can be customized for various host brands and different models of eyeglass panels.

SPECIFICATIONS AND MODELS

DN180 DN200 DN230 DN260



切割环

采用双合金结构,合金宽度8mm,合金硬度大于HRA85,内孔壁采用进口焊条堆焊,硬度达到HRC65以上,抗弯强度2500mpa,质保2万方,可针对各大主机品牌,不同型号切割环进行定制生产。

规格型号

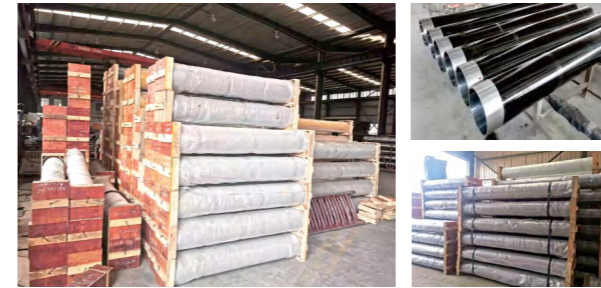
DN180 DN200 DN230 DN260

CUTTING RING

Double alloy structure, alloy width of 8mm, alloy hardness greater than HRA85, inner hole wall welded with imported welding rod, hardness above HRC65, bending strength of 2500mpa, quality assurance of 20000 m3, customized production for various host brands and different types of cutting rings.

SPECIFICATIONS AND MODELS

DN180 DN200 DN230 DN260



混凝土输送缸

采用等离子淬火加镀铬新工艺,镀铬厚度0.25mm,提高了铬层密度、附着力、硬度,使混凝土输送缸的使用寿命在原来基础上提高1.5-2倍,大大减少更换频率,节约用户成本。

规格型号

φ200*1800 φ200*1960 φ200*1746
φ230*1800 φ230*2250 φ260*2250
φ260*2145 φ260*2245 φ260*2345

CONCRETE DELIVERY CYLINDER

Using a new process of plasma quenching and chromium plating, the thickness of chromium plating is 0.25mm, improving the density, adhesion, and hardness of the chromium layer, increasing the service life of the concrete conveying cylinder by 1.5-2 times from the original level, greatly reducing the replacement frequency, and saving user costs.

SPECIFICATIONS AND MODELS

φ200*1800 φ200*1960 φ200*1746
φ230*1800 φ230*2250 φ260*2250
φ260*2145 φ260*2245 φ260*2345



混凝土活塞

夹布活塞:进口丁腈橡胶原料,具有良好的抗耐磨,耐高温性能,输送方量2万方以上。

聚氨酯活塞:进口聚氨酯原料,加入合适添加剂,产品硬度大于95A,输送方量1.5万方以上。

橡胶活塞:以进口丁腈橡胶为原料,具有良好的耐磨耐热性能,摩擦系数小,具有良好自润滑性能。输送方量1.5万方以上。

规格型号

φ180 φ200 φ230 φ260

CONCRETE PISTON

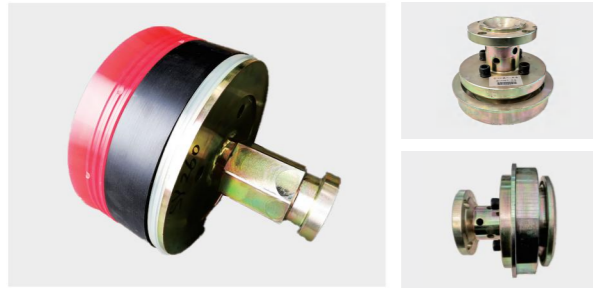
Cloth clamping piston: Imported nitrile rubber raw material, with good wear resistance, high temperature resistance, and transportation capacity of over 20000 cubic meters.

Polyurethane piston: imported polyurethane raw material, added with appropriate additives, with a product hardness greater than 95A, and a transportation volume of more than 15000 cubic meters.

Rubber piston: Made of imported nitrile rubber, it has good wear and heat resistance, low friction coefficient, and good self-lubrication performance. Conveying volume of over 15000 cubic meters.

SPECIFICATIONS AND MODELS

φ180 φ200 φ230 φ260



混凝土活塞组件

组成结构:卡箍,连接法兰,压盘,压盖四件套。

规格型号

φ200 φ230 φ260

CONCRETE PISTON ASSEMBLY

Composition: four piece set of clamp, connecting flange, pressure plate, and gland.

SPECIFICATIONS AND MODELS

φ200 φ230 φ260



大端轴承座

原厂品质,进口材料堆焊,高硬度,硬度≥62HRC,高耐磨,适用于混凝土泵车。

规格型号

φ350 φ360 φ380

LARGE END BEARING SEAT

Original quality, imported material surfacing, high hardness, hardness ≥62HRC, high wear resistance, suitable for concrete pump trucks.

SPECIFICATIONS AND MODELS

φ350 φ360 φ380



小端总成

原厂工艺,安装精度高,轴套组件镀铬≥0.1mm,由小端轴承座,小端轴套,铜套,压环,密封包组成。

规格型号

D105小端五件套

SMALL END ASSEMBLY

Original factory process, high installation accuracy, chrome plating of shaft sleeve components ≥ 0.1mm, composed of small end bearing seat, small end shaft sleeve, copper sleeve, pressure ring, and sealing package.

SPECIFICATIONS AND MODELS

D105 small end 5-piece set



料斗总成

精工打造,原厂工艺,超高耐磨,使用方量20万方,安装尺寸精度高,可定制生产大象,徐工,三一,中联,福田,响箭各大主机品牌不同型号料斗。

规格型号

固定式,悬挂式

HOPPER ASSEMBLY

Precision craftsmanship, original factory process, ultra high wear resistance, 200000 cubic meters of usage, high installation dimension accuracy, and customized production of different models of hopper for major host brands such as elephant, XCMG, Sany, Zoomlion, Futian, and Xiangjian.

SPECIFICATIONS AND MODELS

Fixed type, Suspension type



管卡

使用精密锻造技术和热加工精益制造,材料选用低碳合金钢,重量轻,抗拉强度高,抗拉强度可达到700Mpa以上,使用寿命大于20万方,产品性能稳定,抗撕裂性好。

规格型号

φ125两孔带座(锻造) φ125四孔带座(锻造)
φ150螺丝管卡 φ180螺丝管卡
φ150插销管卡 φ180插销管卡

PIPE CLAMP

Using precision forging technology and hot processing lean manufacturing, the material is low-carbon alloy steel, with light weight, high tensile strength, tensile strength up to 700 Mpa or more, service life greater than 200000 cubic meters, stable product performance, and good tear resistance.

SPECIFICATIONS AND MODELS

φ 125 two-hole belt seat (forged) φ 125 four-hole belt seat (forged)
φ 150 screw pipe clamp φ 180 screw pipe clamp
φ 150 pin pipe clamp φ 180 pin pipe clamp



平皮带 斜皮带托辊

采用冷拔工艺,同心度高,优质密封圈防尘防水,镀锌材质耐磨防腐,无缝钢管降低磨损,轴芯材质采用人本轴承;寿命长转动灵活,烤漆工艺油漆附着高,托辊壁厚2.65mm。

规格型号

108*1150 108*380 89*370

FLAT BELT INCLINED BELT ROLLER

Adopt cold drawing process, high concentricity, high-quality sealing ring dustproof and waterproof, galvanized material wear-resistant and corrosion resistant, seamless steel pipe to reduce wear, and shaft core material adopts humanistic bearings; Long service life, flexible rotation, high paint adhesion during baking process, and 2.65mm wall thickness of idler.

SPECIFICATIONS AND MODELS

108*1150 108*380 89*370



搅拌易损件

耐磨件通过数控加工中心按照品牌厂家生产工艺,规格尺寸进行定制,并且全部调质热处理,耐磨套镀铬,增加硬度,高性能防尘圈能够有效防止泥浆渗入,造成液压系统液压油乳化。

规格型号

搅拌半轴,密封盖,耐磨套,轴承,密封包,过渡法兰

MIXING VULNERABLE PARTS

The wear-resistant parts are customized by the CNC machining center according to the production process and specifications of the brand manufacturer, and all of them are subject to tempering and heat treatment. The wear-resistant sleeve is chrome plated to increase hardness. The high-performance dust ring can effectively prevent mud infiltration, causing emulsification of hydraulic oil in the hydraulic system.

SPECIFICATIONS AND MODELS

Mixing half shaft, sealing cover, wear sleeve, bearing, sealing package, transition flange.



出料口

可定制各品牌主机厂家不同型号混凝土泵出料口,福田,CIFA,三一,中联,徐工等。产品采用进口材料堆焊,高硬度,硬度 $\geq 62\text{HRC}$,高耐磨。

规格型号

$\phi 350$ $\phi 360$ $\phi 380$

OUTLET

Various brands and manufacturers can customize different types of concrete pump discharge ports, such as Foton, CIFA, Sany, Zoomlion, XCMG, etc. The product adopts imported materials for surfacing welding, with high hardness, hardness $\geq 62\text{HRC}$, and high wear resistance.

SPECIFICATIONS AND MODELS

$\phi 350$ $\phi 360$ $\phi 380$



摇臂

数控加工,热处理,渗氮,渗碳调质工艺,材料选择高锰钢,表面粗糙度:3.2,公差:0.01,出厂严格进行材质检测,尺寸检测,硬度检测,确保每一个产品合格。

规格型号

大象28齿,V7 29齿 V7+ 31齿 超高压泵用

ROCKER ARM

CNC machining, heat treatment, nitriding, carburizing and tempering processes, the material selection is high manganese steel, surface roughness: 3.2, tolerance: 0.01, strict material testing, dimensional testing, hardness testing, to ensure that each product is qualified.

SPECIFICATIONS AND MODELS

Elephant 28 teeth, V7 29 teeth, V7+31 teeth for ultra high pressure pumps.



无线遥控器

原装德国大象泵HBC735遥控器,以及HBC727,719,凯商310-D 六节臂6针,凯商R114-A 五节臂25针遥控器,国产自制万能遥控器可匹配各大主机品牌混凝土泵车。

规格型号

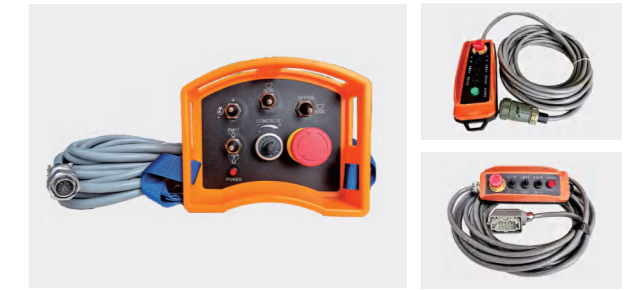
HBC727、719、735 KSTECH 310-D, R114-A

WIRELESS REMOTE CONTROL

The original German elephant pump HBC735 remote controller, as well as HBC727719, Kaishang 310-D 6-arm 6-pin remote controller, Kaishang R114-A 5-arm 25-pin remote controller, and the homemade universal remote controller can match the concrete pump trucks of various major host brands.

SPECIFICATIONS AND MODELS

HBC727、719、735 KSTECH 310-D, R114-A



有线遥控器

有线遥控器主要应用于混凝土拖泵,车载泵,可根据客户需求定制设计生产。也可将有线遥控器升级更换为无线遥控器,更加灵活,简单,实现远程操控。

规格型号

10针 12针 14针

WIRED REMOTE CONTROL

Wired remote controllers are mainly used for concrete towing pumps and vehicle mounted pumps, which can be customized, designed and produced according to customer needs. You can also upgrade a wired remote control to a wireless remote control, making it more flexible and simple to achieve remote control.

SPECIFICATIONS AND MODELS

10, 12, 14 Stitches



接近开关

公司主要销售韩国AUTONICS 瑞士ELCO各种型号工业电器元件,接近开关,编码器, AUTONICS接近开关型号有:PR30-15DP, PR30-15DN, PRL18-8DP, PRL18-8DN, ELCO接近开关型号有:FI8-G18-OP6L, FI8-G18-ON6L, FI8-G18-OP6L-Q12。

规格型号

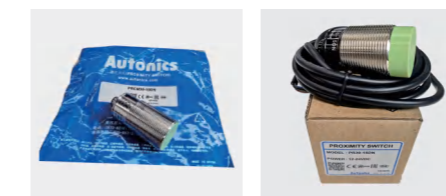
奥托尼克斯 宜科

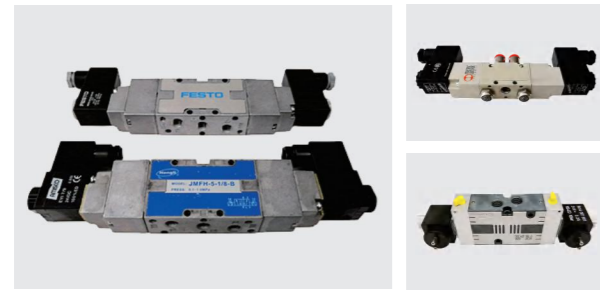
PROXIMITY SWITCH

The company mainly sells various types of industrial electrical components, proximity switches, encoders, etc. in Autonics, Switzerland, and Elco. Autonics proximity switch models include: PR30-15DP, PR30-15DN, PRL18-8DP, PRL18-8DN. Elco proximity switch models include: FI8-G18-OP6L, FI8-G18-ON6L, FI8-G18-OP6L-Q12.

SPECIFICATIONS AND MODELS

Autonics Elco





双控电磁阀

品牌分别为:FESTO、HENGLI、CAMOZZI、METAL WORK.特点:进口品牌,品质值得信赖,反应灵敏,高效稳定,结构紧凑,整体结构设计合理安装工作量小,响应时间短,精工锻造铝合金材质,经久耐用使用安全。

规格型号

SY-JMFH-5-1/8B JMFH-5-1/8B
334D-015-02 7010021200

DUAL CONTROL SOLENOID VALVE

The brands are FESTO, HENGLI, CAMOZZI, METAL WORK. Features: Imported brand, trustworthy quality, responsive, efficient and stable, compact structure, reasonable overall structural design, low installation workload, short response time, precision forged aluminum alloy material, durable and safe to use.

SPECIFICATIONS AND MODELS

SY-JMFH-5-1/8B JMFH-5-1/8B
334D-015-02 7010021200



电路板

定制各品牌混凝土泵控制电路板,专业的工艺能力,进口原材料,严谨的品质控制系统,有效保障产品性能。

规格型号

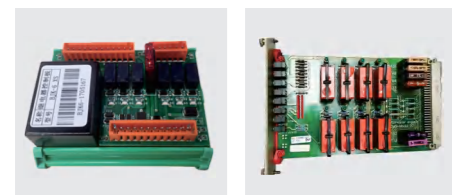
0704-RELAY-01 0704-SPEED-01 BJK-6 BZJ-26L

CIRCUIT BOARD

Customized concrete pump control circuit boards of various brands, professional process capability, imported raw materials, rigorous quality control system, effectively guarantee product performance.

SPECIFICATIONS AND MODELS

0704-RELAY-01 0704-SPEED-01 BJK-6 BZJ-26L



限位开关

品牌: SCHMERSAL, TELEMECANIQUE, 多应用于三一重工, 中联重科, 徐工, 福田, 大象等混凝土泵上。

特点: 最大触发速度: 0.5m/s. 机械使用寿命: 1000万次循环操作。

规格型号

TD 422-10Y-1801/2512-1 ZCKJ404H29

LIMIT SWITCH

Brand: SCHMERSAL, TELEMECANIQUE, mostly used on concrete pumps such as Sany Heavy Industry, Zoomlion Heavy Industry, XCMG, Futian, Elephant, etc. Features: Maximum triggering speed: 0.5m/s.

Mechanical service life: 10 million cycles of operation.

SPECIFICATIONS AND MODELS

TD 422-10Y-1801/2512-1 ZCKJ404H29



比例电磁阀

进口品牌,德国:Rexroth, HAWE,美国:SUN,主要用于调节混凝土泵车,车载泵,拖泵控制压力,流量精准控制设备运行平稳。

规格型号

DRE4K-40 RADK-TECH RT-BLJY-01
PRDP-MDN-224 PMVP 8-41-G24

PROPORTIONAL SOLENOID VALVE

Imported brand, Germany: Rexroth, HAWE, USA: SUN, mainly used for regulating the pressure of concrete pump trucks, on-board pumps, and trailer pumps, and for precise flow control equipment to operate smoothly.

SPECIFICATIONS AND MODELS

DRE4K-40 RADK-TECH RT-BLJY-01
PRDP-MDN-224 PMVP 8-41-G24



气动电磁阀

二位五通气动电磁换向阀,线圈电压为DC24V,国内知名品牌,铝合金材质,经久耐用,使用安全。搅拌站执行元件的动作状态主要由气动电磁换向阀控制实现。

规格型号

4V310-10 SR561A-RN35DW V5V80 4M210-08

PNEUMATIC SOLENOID VALVE

Two position five ventilation electromagnetic directional valve, coil voltage DC24V, well-known domestic brand, aluminum alloy material, durable, and safe to use. The action status of the execution components in the mixing plant is mainly controlled by the pneumatic electromagnetic directional valve.

SPECIFICATIONS AND MODELS

4V310-10 SR561A-RN35DW V5V80 4M210-08



二通道数字式重量变送器

- 1、本产品使用直流24V电源供电,使用交流220V电源供电将会永久损坏产品,且危险。
- 2、接线时请尽量远离上盖打开的产品,谨防碎铜丝掉入,造成元器件短接而损坏产品。
- 3、串行RS485参数为:波特率38400,数据格式7-E-1,通讯协议ZE-SP1。

规格型号

TI-1500(VC2)

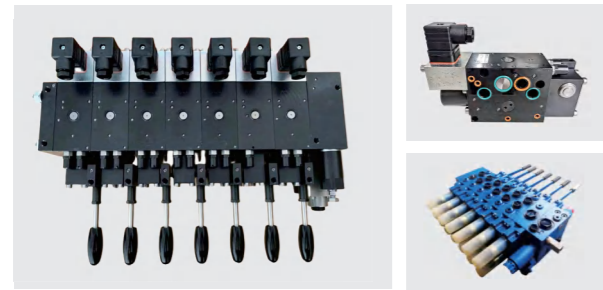
TWO CHANNEL DIGITAL WEIGHT TRANSMITTER

- 1、This product uses a DC 24V power supply, and using an AC 220V power supply will permanently damage the product and be dangerous.
- 2、When wiring, please try to stay away from the product with the cover open as much as possible, and be careful not to let broken copper wires fall in, which may cause short circuiting of components and damage the product.
- 3、The serial RS485 parameters are: baud rate 38400, data format 7-E-1, communication protocol ZE-SP1.

SPECIFICATIONS AND MODELS

TI-1500(VC2)





臂架多路阀

Hawe rexroth为德国进口品牌,各大知名混凝土泵设备厂家都选择这两个品牌多路阀作为臂架控制的核心元件,故障率低,运行平稳,安全可靠。

规格型号

PSV 4S1F/370-3 M4-7003-20/6M4-12PWLSYV011

ARM MULTIPLE VALVE

Hawe rexroth is an imported brand from Germany, and various well-known concrete pump equipment manufacturers choose these two brands of multi way valves as the core components of arm control, with low failure rate, stable operation, and safety and reliability.

SPECIFICATIONS AND MODELS

PSV 4S1F/370-3 M4-7003-20/6M4-12PWLSYV011



搅拌马达

搅拌液压马达具有重量轻、体积小、调速范围大、低速稳定性好、工作可靠、耐冲击、效率高、寿命长等一系列优点。广泛应用于矿山建筑工程、冶金设备、石油、煤矿、船舶、地质勘探等行业。

规格型号

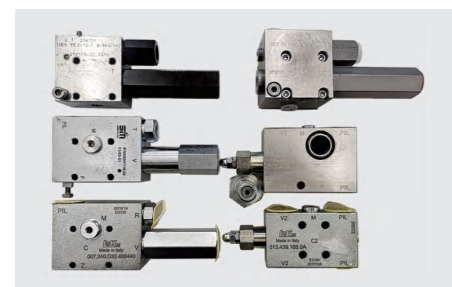
J6K-985 8Y-1000 1QJM12-1.25 BM4-490 5U 985/AY

MIXING MOTOR

The mixing hydraulic motor has a series of advantages, such as light weight, small size, large speed range, good low-speed stability, reliable operation, impact resistance, high efficiency, and long service life. Widely used in mining construction engineering, metallurgical equipment, petroleum, coal mining, shipbuilding, geological exploration and other industries.

SPECIFICATIONS AND MODELS

J6K-985 8Y-1000 1QJM12-1.25 BM4-490 5U 985/AY



臂架平衡阀

进口品牌,性能稳定,安全,高效。

规格型号

哈威 力士乐 伦联

ARM BALANCE VALVE

Imported brand, stable performance, safety, and efficiency.

SPECIFICATIONS AND MODELS

Hawe Rexroth LuEn



回转减速机

1、传动范围比大,结构紧凑和工作表现。
2、体积小,外形美观,加工精度高,噪音低,维护保养简单,使用寿命长。
3、可国外同类产品(如Dinamicoil等品牌),可互换安装。

规格型号

RE1023 RE1022 PG1023 PG1022

ROTARY REDUCER

1、Large transmission range ratio, compact structure, and working performance.
2、Small size, beautiful appearance, high machining accuracy, low noise, simple maintenance, and long service life.
3、It can be installed interchangeably with similar foreign products (such as Dinamicoil and other brands).

SPECIFICATIONS AND MODELS

RE1023 RE1022 PG1023 PG1022



液压油滤芯

过滤材料:采用的玻璃纤维滤材。

过滤精度:从1、3、6、12、25……μm 过滤比:X≥100。

结构强度:1.0Mpa, 2.0Mpa, 16.0Mpa, 21.0Mpa。

使用范围:用于液压、润滑系统的压油过滤,用以滤除系统中污染物,系统的正常运行。

规格型号

SF250M90 SF250M25 MR2504A10A

HYDRAULIC OIL FILTER

Filter material: glass fiber filter material used.

Filtering accuracy: from 1, 3, 6, 12, 25 μ m Filter ratio: X ≥ 100.

Structural strength: 1.0Mpa, 2.0Mpa, 16.0Mpa, 21.0Mpa.

Scope of use: Used for pressure oil filtration in hydraulic and lubrication systems, to filter out pollutants in the system and ensure normal operation of the system.

SPECIFICATIONS AND MODELS

SF250M90 SF250M25 MR2504A10A



搅拌车减速机

适用于各大主机厂家混凝土搅拌车,型号齐全,质量稳定。

规格型号

TOP 75S TOP 68 PMP 8.0 SAUER71.2

MIXER REDUCER

Suitable for concrete mixer trucks from major host manufacturers, with complete models and stable quality.

SPECIFICATIONS AND MODELS

TOP 75S TOP 68 PMP 8.0 SAUER71.2



嘉伦达工程机械专用润滑油 Carenda Engineering Machinery Special Lubricant

18L/200L
高级无灰抗磨

18L/200L
Advanced ashless and wear-resistant

嘉伦达HM高压高清抗磨液压油是由二类加氢基础油与进口精选添加剂按照工程机械的特性调配而成。可用于中、高、压叶片泵、柱塞泵、齿轮泵的液压系统中，各类中高压工程机械设备液压系统。本产品按照40摄氏度运动粘度分为46#\68#等牌号。

Carenda HM high-pressure high-definition anti-wear hydraulic oil is formulated from Class II hydrogenated base oil and imported selected additives according to the characteristics of engineering machinery. It can be used in hydraulic systems of medium, high, and high pressure vane pumps, plunger pumps, and gear pumps, as well as various hydraulic systems of medium and high pressure engineering machinery equipment. This product is classified into brands such as 46 # 68 # based on its kinematic viscosity at 40 degrees Celsius.



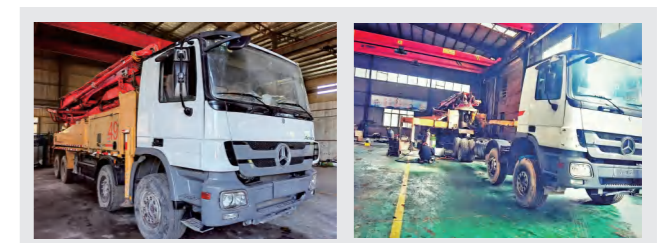
砼创机械再制造中心 Tong Chuang Mechanical Remanufacturing Center

工程机械再制造已经成为工程机械产业链不可缺少的部分。符合节能减排的产业要求，有助于双碳目标的实现。砼创机械翻新再制造主要从事于混凝土机械类的设备，可以提供各类品牌的混凝土机械再制造服务。公司拥有多名十年以上的专业技术人员及维修技师，公司制定了完善的服务体系。可以按照客户的要求为客户做再制造定制化服务；也可以根据客户提供的使用环境为客户推荐再制造的产品和方案。公司提供的再制造产品厂内制造全流程跟踪，交付客户后提供全周期跟踪服务。砼创再制造，立足长沙，服务全球！

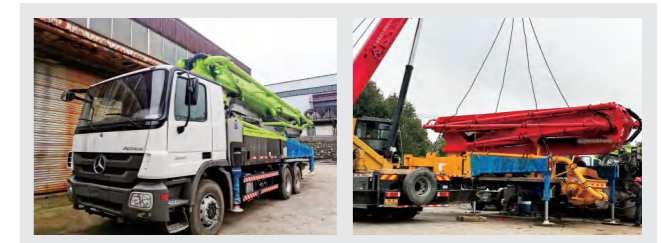
Remanufacturing of construction machinery has become an indispensable part of the construction machinery industry chain. Meeting the industry requirements for energy conservation and emission reduction is conducive to achieving dual carbon standards. The renovation and remanufacturing of concrete machinery is mainly engaged in equipment related to concrete machinery, and can provide various brands of concrete machinery remanufacturing services. The company has more than ten years of professional technical personnel and maintenance technicians. The company has established a comprehensive service system and remanufacturing standards. Can provide customized remanufacturing services according to customer requirements; We can also recommend remanufactured products and solutions based on the usage environment provided by customers. The company provides full process tracking of remanufactured products in the factory, and provides full cycle tracking services after delivery to customers. Concrete innovation and remanufacturing, based in Changsha, serving the world!



▲ 全新整车再制造
New vehicle remanufacturing



▲ 更换底盘升级再制造
Replacing the chassis, upgrading, and remanufacturing

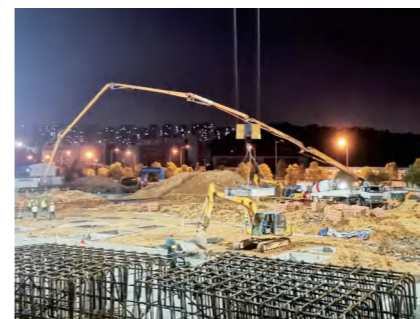


▲ 泵送臂架单元再制造
Remanufacturing of pumping arm unit



服务案例

SERVICE CASE LIST



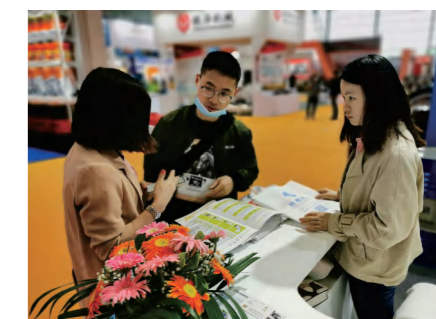
◀ 砼创机械所售设备在海外施工
The equipment sold by Concrete Innovation Machinery is being constructed overseas



▲ 助力国家重点工程建设 Assist in the construction of national key projects



▲ 翻新再制造设备一站式服务 Onestopserviceforrefurbishmentandremanufacturingequipment



▲ 参加国际工程机械展 Participate in the International Engineering Machinery Exhibition